

Symphonie Nr. 5

e-moll

Violoncello

Peter Iljitsch Tschaikowsky op. 64

I

Andante
pesante e tenuto sempre

p *p^ui f* *mf* *p* *mf* *p*

p *cresc.* *f* *f* *p*

A 3 *f* *mf* *p* *mf* *sf* *mf*

Allegro con anima

f *p* *p* *pp* *ppp*

sempre ppp

B

p *mf* *mf* *p* *f* *ff* *f mf* *mf*

p *f* *ff* *f mf* *mf* *p* *f* *ff* *f mf*

mf *p* *f* *ff* *f* *ff* *f* *ff* *ff*

D *ff* *ff* *sempre ff*

92 *1* *fff*

99 *fff* **E**

105 *fff*

111 **F**

116 *molto espress.*
sf p mf f p < mf cresc. ff p < sff mp

126 *Poco meno animato* *string.* *Tempo I*
sff mp < ff p mf *pizz.*

134 *p p mp f p*

140 **G** *arco* *pp* *pp* *p*

152 *Un pochetto più animato* *pizz.* *arco*
ff mf sff mf

161 *sffp mf sff mf sffp*

170 *Molto più tranquillo* *p p cresc.*

177 *f dim. p cresc.* **H**

Violoncello

3

183 *f* *f* *stringendo al -* *p cresc. molto* *f cresc.*

191 *f cresc.* *fff* **Tempo I**

198 *fff* *f cresc.* *fff*

203 *f* *fff* *ff*

208 *f*

213 *p* Viol. II Viol. I

238 *p* *mf* *mf*

235 *mf* *f*

242 *f* *p* *f* *p* *f*

248 *p* *f* *p* *f* *ff* *ff*

257

262 *f*

Violoncello

269 **N** 2 *mf* *f*

281 *mf* *f* *ff* 1

291 1 **O** *ff* *fff*

300 1 *f* *mf* *dim.*

309 **P** *ff* *f* *mf* *dim.*

317 *p* *pp* **Q** *p*

325 8 **R** *p*

339 *p* *mf*

345 *mf* *p* *f* *ff* *mf* *mf* *p* *f*

352 *ff* *mf* *mf* *p* *f* *ff* *mf* 3 1

362 *f* *ff* *fff* **T** *fff*

366 *f* *ff* *mf* *f* *p* *mf cresc.*

374 *sf* *mf* *f* *p* *mf cresc.*

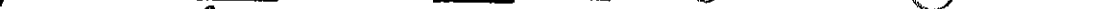
divisi *unis.* *molto espress.*

5

Tempo I

Un pochettino più mosso

Molto più tranquillo come sopra

466 

Viol. I

482 *ff*

487 *p*

493 *cresc.*

499 *f cresc.* *fff*

505 *ff*

511 *f* *mf* *dim.*

517 *p*

523 *p* *pp*

531 *pp* *ppp* *non divisi*

II

Andante cantabile con alcuna licenza

12 *pp* *animando* *riten.* *sostenuto* *animando* *sostenuto* *pp*

23 *pp* *Con moto* *animato*

Tempo I pizz.

108 *mf*

113 **G** *animando*

118 *riten.* *sostenuto* *arco* *mp* *animando* *sostenuto* *f*

124 **H** *mp* *animando* *riten.* *Più mosso* *mf*

130 *cresc.* *f* *mf*

134 *Un poco più animato* *f* *ff* **I**

140 *riten.* *Andante mosso* *fff con anima*

144 *animando* *riten.* *animando un poco* *con desiderio e passione*

149 *con tutta forza* **K**

153 *Molto più andante* *animando* *riten.* *Più animato* *riten.* *Allegro non troppo* *fff* *ff* *f* *mf* *p*

159

164 *fff* *ritenuto* **4** *Tempo I* *pizz.* *pp* *arco* *dolciss.*

174 *pp*

179 *pizz.* *pp* *ppp* *arco* *ritenuto molto* *p* *pppp*

Valse
Allegro moderato

III

11 *pizz.* *p* *arco* **A** *p*

18 *p* *pizz.* *p*

26 *p*

35 **B** *arco* *p* *pizz.* *f* *mf cresc.* *f* *pizz.* *p*

42 *p cresc.* *mf cresc.* **C**

51 *f* *mf cresc.* *f* *pizz.* *p* **D**

60 *mf* *mp* *f*

69 *arco* *p* *ff* *p*

Violoncello musical score, measures 84-179. The score is written in bass clef with a key signature of two sharps (F# and C#). The music features various dynamics, articulations, and fingerings.

Measures 84-91: Measure 84 starts with a box labeled 'E' and a dynamic of *p*. Measures 85-91 include dynamics of *mf*, *p*, *mf*, and *p*. Fingerings 1 and 2 are indicated.

Measures 92-99: Measure 92 starts with a box labeled 'F' and a dynamic of *mf*. Measures 93-99 include dynamics of *p*, *mf*, *pp*, *mf*, and *pp*. Fingerings 2 and 5 are indicated. A 'pizz.' (pizzicato) marking is present in measure 95, along with a 'div.' (divisi) marking.

Measures 100-107: Measure 100 starts with a box labeled 'G' and a dynamic of *mf*. Measures 101-107 include dynamics of *mf* and *pp*. A 'unis.' (unison) marking is present in measure 101.

Measures 108-115: Measure 108 starts with a box labeled 'H' and a dynamic of *mf*. Measures 109-115 include dynamics of *mf* and *pp*. A 'pizz.' marking is present in measure 110.

Measures 116-123: Measure 116 starts with a box labeled 'I' and a dynamic of *mf*. Measures 117-123 include dynamics of *mf* and *f*. A 'pizz.' marking is present in measure 117.

Measures 124-131: Measure 124 starts with a box labeled 'J' and a dynamic of *mf*. Measures 125-131 include dynamics of *mf* and *f*. A 'pizz.' marking is present in measure 125.

Measures 132-139: Measure 132 starts with a box labeled 'K' and a dynamic of *p*. Measures 133-139 include dynamics of *p* and *f*. A 'pizz.' marking is present in measure 133.

Measures 140-147: Measure 140 starts with a box labeled 'L' and a dynamic of *p*. Measures 141-147 include dynamics of *p* and *f*. A 'pizz.' marking is present in measure 141.

Measures 148-155: Measure 148 starts with a box labeled 'M' and a dynamic of *p*. Measures 149-155 include dynamics of *p* and *f*. A 'pizz.' marking is present in measure 149.

Measures 156-163: Measure 156 starts with a box labeled 'N' and a dynamic of *p*. Measures 157-163 include dynamics of *p* and *f*. A 'pizz.' marking is present in measure 157.

Measures 164-171: Measure 164 starts with a box labeled 'O' and a dynamic of *p*. Measures 165-171 include dynamics of *p* and *f*. A 'pizz.' marking is present in measure 165.

Measures 172-179: Measure 172 starts with a box labeled 'P' and a dynamic of *p*. Measures 173-179 include dynamics of *p* and *f*. A 'pizz.' marking is present in measure 173.

186 *p cresc.* - - - - *mf cresc.* - - - - *f* *mf cresc.*

196 *f* *p* *mf*

206 *mp* *f* *p*

216 *mf* *f* *cresc.* *ff*

226 *p* *mf* *f* *cresc.*

236 *ff* *p* *pp* *pp*

246 *mf* *pp* *mf* *pp*

256 *pp* *pp* *pp* *ff*

Finale
Andante maestoso

IV

8 *mf* *f* *f*

16 *p* *poco a poco cresc.* - - - - *f*

Violoncello

arco

mf *legatissimo* *p*

piu f *mf*

f

B *p* *cresc.*

f

ff *f*

ff *ff*

C

p *pp* *mp*

Allegro vivace (alla breve)

f *ff*

ff

D *mf* *ff*

E *fff* *1*

Violoncello

13

84 *pizz.* *mf* *arco* *mf* *sf* *mf* 1

92 *pizz.* *mf* *arco* *mf* *sf* *mf* *sf* *p* *p* *F*

100 *sf* *p* *mf* *mf*

109 *fff* *mf* *ff* *G*

117 *fff* 1 2 3 4 5 *dim.*

124 6 7 8 9 *H* 10 11 *p* *mf*

132 *mf* *mf*

140 *poco cresc.* *f*

148 *I* *mf* *mf* *f*

156 *mf* *dim.* *p* *mf* *dim.* *p*

163 *K* *f* 1 2 3 4

168 *cresc.* *ff* *ff*

Violoncello musical score, measures 173-230. The score is written in bass clef with a key signature of one sharp (F#). The notation includes various musical symbols such as notes, rests, slurs, and dynamic markings.

Measures 173-177: First system, measures 173-177. Includes slurs and accents.

Measures 178-183: Second system, measures 178-183. Includes a box labeled 'L' and slurs.

Measures 184-189: Third system, measures 184-189. Includes slurs and a dynamic marking *ff*.

Measures 190-194: Fourth system, measures 190-194. Includes slurs and accents.

Measures 195-200: Fifth system, measures 195-200. Includes slurs and accents.

Measures 201-208: Sixth system, measures 201-208. Includes a box labeled 'M' and a dynamic marking *ff*.

Measures 209-215: Seventh system, measures 209-215. Includes a box labeled 'N' and a dynamic marking *fff*.

Measures 216-220: Eighth system, measures 216-220. Includes a dynamic marking *ff*.

Measures 221-225: Ninth system, measures 221-225. Includes slurs.

Measures 226-229: Tenth system, measures 226-229. Includes a dynamic marking *fff*.

Measures 230-230: Eleventh system, measure 230. Includes a box labeled 'O' and a dynamic marking *fff*.

239 *ff*

250 *fff* *dim.* *mf* **P**

259 *mf* *mf* *f* *ff* *dim.*

270 *mf* *sf dim.* *p*

282 *sf dim.* *pp* *sempre pp*

Poco più animato

296 *div.* *ff*

303 *ff* *unis.*

310 *Tempo I* *mf* *ff*

318 *ff* **R** 1

326 *pizz.* *mf* *arco* *mf* *sf* *mf* 1

Violoncello musical score, measures 334-410. The score is written in bass clef with a key signature of one sharp (F#). It includes various dynamics, articulations, and performance markings.

Measures 334-343: *pizz.* *mf*, *arco* *mf*, *sf*, *mf*, *sf*. Markings include *pizz.*, *arco*, and *S* in a box.

Measures 344-353: *p*, *sf*, *mf*, *p*, *mf*. Markings include *p*, *sf*, *mf*, and *V* (vertical line).

Measures 354-363: *sf*, *mf*. Markings include *sf*, *mf*, and *T* in a box.

Measures 364-373: *ff*, *ff*. Markings include *ff*, *ff*, and *U* in a box.

Measures 374-383: *fff*, *dim.*. Markings include *fff*, *dim.*, and *V* in a box.

Measures 384-393: *p*, *mf*. Markings include *p*, *mf*, and *V* in a box.

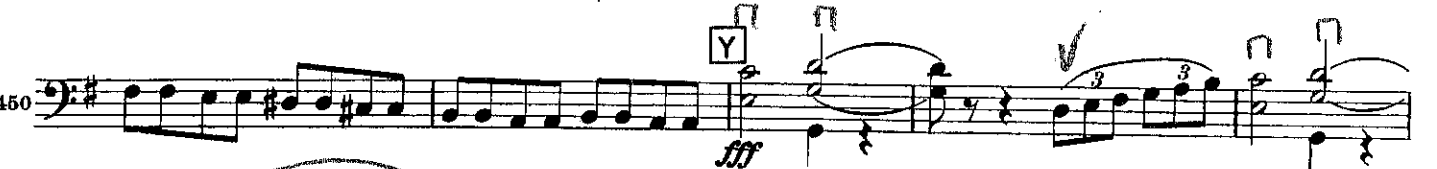
Measures 394-403: *mf*, *poco cresc.*. Markings include *mf*, *poco cresc.*, and *V* in a box.

Measures 404-413: *mf*, *f*, *mf*, *dim.*, *p*. Markings include *mf*, *f*, *mf*, *dim.*, *p*, and *W* in a box.

Measures 414-423: *mf*, *dim.*, *p*, *f*. Markings include *mf*, *dim.*, *p*, *f*, and *X* in a box.

Violoncello

17



Moderato assai e molto maestoso

472 *f* *ff* *largamente*

479 *ff*

484

488 *ff*

491

498 *ff* *ff*

504 *Presto* *p* *cresc. al* *ff*

512 *p* *cresc.* *ff*

520

526 *ff*

538 *Molto meno mosso* *sempre ff*

549 *ff*

557

43